



COMPANY  
PROFILE '24-25

# ADVANCE ANALYTIK

REVOLUTIONIZING ONLINE MONITORING SOLUTIONS



[www.advanceanalytik.com](http://www.advanceanalytik.com)  
[sales@advanceanalytik.com](mailto:sales@advanceanalytik.com)

## ABOUT US

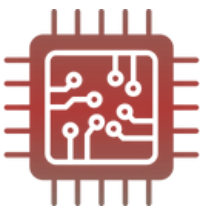


We, Advance Analytik KFT are a Budapest Hungary based manufacturing company. Our company's long-standing presence in Budapest and our dedication to developing high-quality products our operation is a testament to our success and adaptability in the industry. With a strong commitment to precision and performance, we offer a comprehensive range of advanced analytical instruments, including analog & digital sensors, controllers and modular analyzers. We prioritize knowledge exchange and collaboration with our suppliers, customers, and sales partners. Such partnerships are essential for fostering innovation and staying up-to-date with the latest advancements in technology and processes.

## SKILLS & STRENGTH

We have a diverse set of skills and resources that enable us to approach different situations with precision. Our ability to manufacture electronics and optical equipments, and develop software, gives us a wide range of tools to work with and allows us to create our own solutions to problems. The fact that we have developed our own software that is integrated with our analyzers and provides real-time measurements is particularly impressive.

This not only demonstrates our technical capabilities but also your ability to innovate and create customized solutions that meet your specific needs.



**ELECTRONICS**



**OPTICS**



**FLUIDS**



**CHEMISTRY**



**THERMAL**



**STRONG & RELIABLE  
PARTNERSHIPS**



**QUALITY &  
PERFORMANCE**



**RESEARCH &  
DEVELOPMENT**



**VIZ CLASSIC - pH/ORP**  
( Single Channel  
Transmitter with HART )

The Viz Classic Series pH & ORP single-channel transmitter is engineered for precision measurement of pH (acidity/alkalinity) and ORP (oxidation-reduction potential) in various industrial processes. Operating on a two-wire 4-20 mA current loop, this transmitter is powered and transmits data through the same two wires, simplifying installation and reducing wiring costs. The integrated HART (Highway Addressable Remote Transducer) protocol allows for digital communication alongside the analog signal, enabling remote calibration, configuration, and diagnostics without disrupting measurement. The Viz Classic Series is ideal for use in water and wastewater treatment, chemical manufacturing, pulp and paper, food and beverage, and other industries where precise pH and ORP control is vital.

## Technical Specifications

<b>INPUTS</b>	pH - Analog type ORP - Analog type Temperature - PT100 / PT1000 software Selectable
<b>OUTPUTS</b>	1 x 4 - 20 mA with HART protocol on the signal line
<b>MOUNTING</b>	2 different models: Wall mount / Panel mount
<b>RANGE</b>	pH 0 -14, ORP -1500 to +1500 mV
<b>POWER SUPPLY</b>	12-32V DC, Loop Powered (Single line for Power and Output signal)
<b>DISPLAY</b>	16x2 Character display
<b>COMMUNICATION INTERFACE</b>	<ul style="list-style-type: none"> <li>• <b>HART Version:</b> Compatible with HART 5, 6, and 7</li> <li>• <b>Device Diagnostics:</b> Includes basic device and process diagnostics</li> <li>• <b>Digital Communication:</b> Two-way communication for calibration, configuration, and diagnostics</li> <li>• <b>Protocol Support:</b> Standard HART Protocol with 4-20 mA analog signal</li> </ul>
<b>TEMPERATURE</b>	-20 to 200 deg C , Compensation : Integrated
<b>ENCLOSURE</b>	IP65 for Wall mount, or Only front facia IP65 for Panel Mount
<b>CALIBRATION</b>	Dual/three Point Sensor Calibration, Current Loop Calibration Two point Temperature Calibration
<b>DIAGNOSTICS</b>	Sensor Open / Short, Temp Sensor Open/ Short, Out of range Calibration error, Test output current
<b>CABLE CONNECTIONS</b>	PG9 Polyurethane Glands: 2Nos
<b>DIMENSIONS</b>	12.7 x 5.7 x 7.9 cm L*W*H <i>*Dimensions subject to change depending on configuration*</i>



## VIZ CLASSIC - Conductivity/TDS

( Single Channel  
Transmitter with HART )

The Viz Classic Series features a high-performance two-wire transmitter for accurate conductivity and Total Dissolved Solids (TDS) measurements. This single-channel device ensures reliable data for water quality monitoring across various applications, making it ideal for both industrial and environmental use. With HART protocol support, it allows seamless integration with control systems, facilitating real-time data transmission and diagnostics. The compact and durable design simplifies installation while providing long-lasting performance in challenging conditions. The Viz Classic Series is ideal for use in water and wastewater treatment, industrial processes, aquaculture, desalination plants, and other industries where precise TDS and Conductivity control is vital.

## Technical Specifications

<b>INPUTS</b>	<b>Conductivity - Analog type</b> <b>TDS - Analog type</b> <b>Temperature - PT100 / PT1000 software Selectable</b>
<b>OUTPUTS</b>	<b>1 x 4 - 20 mA with HART protocol on the signal line</b>
<b>MOUNTING</b>	<b>2 different models: Wall mount / Panel mount</b>
<b>RANGE</b>	<b>As per cell constant given below</b> <b>0.01 : 0 - 50 uS/cm</b> <b>0.1 : 0-500 us/cm</b> <b>1 : 0-5000 us/cm</b> <b>10 : 0-50000 us/cm</b>
<b>POWER SUPPLY</b>	<b>12-32V DC, Loop Powered (Single line for Power and Output signal)</b>
<b>DISPLAY</b>	<b>16x2 Character display</b>
<b>COMMUNICATION INTERFACE</b>	<ul style="list-style-type: none"> <li>• <b>HART Version: Compatible with HART 5, 6, and 7</b></li> <li>• <b>Device Diagnostics: Includes basic device and process diagnostics</b></li> <li>• <b>Digital Communication: Two-way communication for calibration, configuration, and diagnostics</b></li> <li>• <b>Protocol Support: Standard HART Protocol with 4-20 mA analog signal</b></li> </ul>
<b>TEMPERATURE</b>	<b>-20 to 200 deg C , Compensation : Integrated</b>
<b>ENCLOSURE</b>	<b>IP65 for Wall mount, or Only front facia IP65 for Panel Mount</b>
<b>CALIBRATION</b>	<b>Dual/three Point Sensor Calibration, Current Loop Calibration Two point Temperature Calibration</b>
<b>DIAGNOSTICS</b>	<b>Sensor Open / Short, Temp Sensor Open/ Short, Out of range Calibration error, Test output current</b>
<b>CABLE CONNECTIONS</b>	<b>PG9 Polyurethane Glands: 2Nos</b>
<b>DIMENSIONS</b>	<b>12.7 x 5.7 x 7.9 cm L*W*H</b> <i>*Dimensions subject to change depending on configuration*</i>





**VIZ ECO SOLO**  
( Single Channel Transmitter )

The Advance Analytik Viz-Eco-Solo, a Single - channel transmitter, is an advanced instrument designed for comprehensive water quality monitoring. Compatible with multiple different sensors such as pH, DO, ORP, conductivity, turbidity, SS, COD, BOD, TOC, TSS, TDS, Nitrate, Nitrite, Color, Sludge Level, ISE, Residual Chlorine and others, this device offers versatility for a wide range of applications. Its plug-and-play sensor integration simplifies setup, while the flexible configuration allows users to adapt the system to their specific monitoring needs. The transmitter's user-friendly interface enables real-time data visualization and seamless integration with data logging systems, ensuring efficient data management.

## Technical Specifications

<b>INPUTS</b>	<p>Select any one Sensor (Digital/Analog/ISE)</p> <p>pH - Analog, Digital</p> <p>ORP - Analog, Digital</p> <p>Chlorine Sensor - Potentiometric/ISE</p> <p>Conductivity/Total Dissolved solids - Analog/Digital</p> <p>Dissolved Oxygen - Optical (Digital Type)</p> <p>Turbidity - Optical (Digital Type)</p> <p>Sludge Level - Optical (Digital Type)</p> <p>UV-VIS Sensor - Any One - COD,BOD,TOC,TSS,Nitrate,Nitrite,Color</p> <p>Total Suspended solids - IR Based</p> <p>Ion Selective Electrode - Analog</p>
<b>OUTPUTS</b>	1 x 4-20mA active output (load of 500 ohm max)
<b>RELAYS</b>	1 x electromechanical SPDT (Form C) contact, 5 A Programmable individually for high or low alarm.
<b>MEMORY</b>	<p>16 GB Memory Card Slot (Stores 1 Year measurement Data) Depending upon measurement cycle frequency.</p> <p><i>*Memory card can be made available upon request*</i></p>
<b>POWER SUPPLY</b>	AC power supply: 80 - 265 VAC (50/60Hz); DC power supply: 9-36VDC
<b>DISPLAY</b>	128*64 dot matrix LCD with LED backlight
<b>COMMUNICATION INTERFACE</b>	Modbus RS485, 4-20mA
<b>CERTIFICATIONS</b>	IP65/NEMA4X
<b>ENCLOSURE</b>	Glass-filled nylon synthetic polyamide thermoplastic (top cover); Aluminum powder dusting (lower shell)
<b>DIMENSIONS</b>	145 x 125 x 162 mm L*W*H
<b>WEIGHT</b>	1.5Kg
<b>OPERATING TEMPERATURE</b>	-15 to 60°C





The Viz-Eco-Duo Parameter Transmitter is an advanced solution for simultaneous monitoring of diverse parameters, catering to a wide range of customer requirements. Compatible with multiple different sensors and offers versatility for a wide range of applications. With support for up to 2 sensors, various data transmission options, and a user-friendly interface, the Viz-Eco-Duo ensures efficient integration, reduced operational costs, and reliable parameter monitoring.

**VIZ ECO DUO**  
( Dual Channel Transmitter )

## Technical Specifications

<b>INPUTS</b>	<p>Select any two Sensor (Digital/Analog/ISE)</p> <p>pH - Analog, Digital</p> <p>ORP - Analog, Digital</p> <p>Chlorine Sensor - Potentiometric/ISE</p> <p>Conductivity/Total Dissolved solids - Analog/Digital</p> <p>Dissolved Oxygen - Optical (Digital Type)</p> <p>Turbidity - Optical (Digital Type)</p> <p>Sludge Level - Optical (Digital Type)</p> <p>UV-VIS Sensor - Any One - COD,BOD,TOC,TSS,Nitrate,Nitrite,Color</p> <p>Total Suspended solids - IR Based</p> <p>Ion Selective Electrode - Analog</p>
<b>OUTPUTS</b>	2 x 4-20mA active output (load of 500 ohm max)
<b>RELAYS</b>	2 x electromechanical SPDT (form C) contact, 5 A Programmable individually for high or low alarm.
<b>MEMORY</b>	<p>16 GB Memory Card Slot (Stores 1 Year measurement Data) Depending upon measurement cycle frequency.</p> <p><i>*Memory card can be made available upon request*</i></p>
<b>POWER SUPPLY</b>	AC power supply: 80 - 265 VAC (50/60Hz); DC power supply: 9-36VDC
<b>DISPLAY</b>	128*64 dot matrix LCD with LED backlight
<b>COMMUNICATION INTERFACE</b>	Modbus RS485, 4-20mA
<b>CERTIFICATIONS</b>	IP65/NEMA4X
<b>ENCLOSURE</b>	Glass-filled nylon synthetic polyamide thermoplastic (top cover); Aluminum powder dusting (lower shell)
<b>DIMENSIONS</b>	145 x 125 x 162 mm L*W*H
<b>WEIGHT</b>	1.5Kg
<b>OPERATING TEMPERATURE</b>	-15 to 60°C





**VIZ ECO MULTI**  
( Multiple Channel Transmitter )

The Viz Eco Multi is a multi-channel transmitter that offers an advanced solution for monitoring multiple parameters simultaneously, meeting a variety of customer needs. Designed for applications in water quality monitoring across wastewater treatment plants, waterworks, water stations, surface water, and industrial settings, this versatile transmitter brings unparalleled flexibility and ease of use to the field. With support for up to 7 sensors, various data transmission options, and a user-friendly interface, the Viz Eco Multi ensures efficient integration, reduced operational costs, and reliable parameter monitoring.

## Technical Specifications

Electrical Specifications	
Power Supply	AC: 85 - 265 VAC; DC: 9 - 36 VDC
Communication Protocol	MODBUS RS485 (standard), 4G: UDP/TCP, NB: UDP (optional)
Physical Specifications	
Main Material	(Glass-filled nylon synthetic polyamide thermoplastic) (top cover); Aluminum powder dusting (lower shell)
Protective Rate	IP65/ NEMA4X
Dimensions	260mm x 200mm x 123.3mm (L×W×H)
Weight	2.0KG
Environmental Specifications	
Operating temperature	-15 to 60°C
Supported Parameters and Sensors	
Supported Sensors	Up to 7 sensors
Display and Interface	
Screen	7-inch color touch screen
User Interface	Intuitive and user-friendly menu
Data Transmission	
Transmission Methods	4~20mA, MODBUS RS485, Wireless (optional)
Output	
Analog Output	8 x 4-20mA active output (load of 500 ohm max)
Relay	4 x electromechanical SPDT (form C) contact, 5 A Programmable individually for high or low alarm.



**VIZ PRO SINGLE**  
( Single Channel Transmitter )

The Advance Analytik Viz Pro Single - channel transmitter is an advanced instrument designed for comprehensive water quality monitoring. Capable of measuring multiple parameters such as pH, DO, ORP, conductivity, turbidity, SS, and others, this device offers versatility for a wide range of applications. Its plug-and-play sensor integration simplifies setup, while the flexible configuration allows users to adapt the system to their specific monitoring needs. The transmitter's user-friendly interface enables realtime data visualization and seamless integration with data logging systems, ensuring efficient data management.

## Technical Specifications

<b>INPUTS</b>	<b>Select any one Sensor (Digital/Analog/4 to 20mA/ISE)</b> pH - Analog pH - Digital ORP - Analog ORP - Digital Chlorine Sensor - Potentiometric Conductivity/Total Dissolved solids - Analog/Digital Dissolved Oxygen - Polarographic/Optical Turbidity - Digital Sludge Level - Optical/Digital UV-VIS Sensor - (COD,BOD,TOC,TSS,Color,UV 254) Total Suspended solids - IR Based Ion Selective Electrode - Analog/4 to 20 mA Temperature - PT100,PT1000, RTD, Thermocouple
<b>OUTPUTS</b>	1 x 4-20mA active output (load of 500 ohm max)
<b>RELAYS</b>	2 x electromechanical SPDT (Form C) contact, 5 A Programmable individually for high or low alarm.
<b>FREE SOCKETS</b>	2 x free sockets for additional modules among 4-20mA input module, 2-wire or 4-wire (15V DC source, 50 mA max) 4-20mA active output
<b>MEASURING MODE</b>	Continuous/Cyclic/Dynamic Mode
<b>MEMORY</b>	16 GB Memory Card (Stores 1 Year measurement Data) Depending upon measurement cycle frequency.
<b>POWER SUPPLY</b>	90 - 265 VAC 47/63 Hz or 24V DC 0.5 A
<b>TOUCH SCREEN</b>	5.0" Inch Color TFT LCD 800 x 480 pixels with Industrial projected capacitive touch screen.
<b>COMMUNICATION INTERFACE</b>	RS 232 and RS 485
<b>CERTIFICATIONS</b>	CE, EN 61010-1, EN 61326, IP66, IP68
<b>ENCLOSURE</b>	IP66, IP68 (24 Hours-2M Depth) Industrial Polycarbonate Housing Optional pipe mounting brackets/ Pole Mounting/Wall Mounting/Panel Mounting Brackets.
<b>DIMENSIONS</b>	296 x 225 x 185 mm
<b>WEIGHT</b>	3Kg approx. (Depending on Configuration)





**VIZ PRO DUAL**  
( Dual Channel Transmitter )

Capable of measuring multiple parameters such as pH, DO, ORP, conductivity, turbidity, SS, and others, this device offers versatility for a wide range of applications. Its plug-and-play sensor integration simplifies setup, while the flexible configuration allows users to adapt the system to their specific monitoring needs. The transmitter's user-friendly interface enables real-time data visualization and seamless integration with data logging systems, ensuring efficient data management. This enables timely interventions, ensuring water safety and sustainability for the benefit of both ecosystems and human populations.

## Technical Specifications

<b>INPUTS</b>	<b>Select any two Sensor (Digital/Analog/4 to 20 mA/ISE)</b> pH - Analog pH - Digital ORP - Analog ORP - Digital Chlorine Sensor - Potentiometric Conductivity/Total Dissolved solids - Analog/Digital Dissolved Oxygen - Polarographic/Optical Turbidity - Digital Sludge Level - Optical/Digital UV-VIS Sensor - (COD,BOD,TOC,TSS,Color,UV 254) Total Suspended solids - IR Based Ion Selective Electrode - Analog/4 to 20 mA Temperature - PT100,PT1000, RTD, Thermocouple
<b>OUTPUTS</b>	2 x 4-20mA active output (load of 500 ohm max)
<b>RELAYS</b>	2 x electromechanical SPDT (form C) contact, 5 A Programmable individually for high or low alarm.
<b>FREE SOCKETS</b>	4 x free sockets for additional modules among 4-20mA input module, 2-wire or 4-wire (15V DC source, 50 mA max) 4-20mA active output
<b>MEASURING MODE</b>	Continuous/Cyclic/Dynamic Mode
<b>MEMORY</b>	16 GB Memory Card (Stores 1 Year measurement Data) Depending upon measurement cycle frequency.
<b>POWER SUPPLY</b>	90 - 265 VAC 47/63 Hz or 24V DC 0.5 A
<b>TOUCH SCREEN</b>	5.0" Inch Color TFT LCD 800 x 480 pixels with Industrial projected capacitive touch screen.
<b>COMMUNICATION INTERFACE</b>	RS 232 and RS 485
<b>CERTIFICATIONS</b>	CE, EN 61010-1, EN 61326,IP66,IP68
<b>ENCLOSURE</b>	IP66, IP68 (24 Hours-2M Depth) Industrial Polycarbonate Housing Optional pipe mounting brackets/ Pole Mounting/Wall Mounting/Panel Mounting Brackets.
<b>DIMENSIONS</b>	296 x 225 x 185 mm
<b>WEIGHT</b>	3Kg approx. (Depending on Configuration)



**VIZ PRO MULTI**  
( Multiple Channel Transmitter )

The Viz Multi-Parameter Transmitter is an advanced solution for simultaneous monitoring of diverse parameters, catering to a wide range of customer requirements. Designed for applications in water quality monitoring across wastewater treatment plants, waterworks, water stations, surface water, and industrial settings, this versatile transmitter brings unparalleled flexibility and ease of use to the field. With support for up to 4 sensors, various data transmission options, and a user-friendly interface, the Viz Multi ensures efficient integration, reduced operational costs, and reliable parameter monitoring.

## Technical Specifications

<b>INPUTS</b>	<p>Select any four Sensor (Digital/Analog/4 to 20 mA/ISE)</p> <ul style="list-style-type: none"> <li>pH - Analog</li> <li>pH - Digital</li> <li>ORP - Analog</li> <li>ORP - Digital</li> <li>Chlorine Sensor - Potentiometric</li> <li>Conductivity/Total Dissolved solids - Analog/Digital</li> <li>Dissolved Oxygen - Polarographic/Optical</li> <li>Turbidity - Digital</li> <li>Sludge Level - Optical/Digital</li> <li>UV-VIS Sensor - (COD,BOD,TOC,TSS,Color,UV 254)</li> <li>Total Suspended solids - IR Based</li> <li>Ion Selective Electrode - Analog/4 to 20 mA</li> <li>Temperature - PT100,PT1000, RTD, Thermocouple</li> </ul>
<b>OUTPUTS</b>	4 x 4-20mA active output (load of 500 ohm max)
<b>RELAYS</b>	4 x electromechanical SPDT (Form C) contact, 5 A Programmable individually for high or low alarm.
<b>FREE SOCKETS</b>	6 x free sockets for additional modules among 4-20mA input module, 2-wire or 4-wire (15V DC source, 50 mA max) 4-20mA active output
<b>MEASURING MODE</b>	Continuous/Cyclic/Dynamic Mode
<b>MEMORY</b>	16 GB Memory Card (Stores 1 Year measurement Data) Depending upon measurement cycle frequency.
<b>POWER SUPPLY</b>	90 - 265 VAC 47/63 Hz or 24V DC 0.5 A
<b>TOUCH SCREEN</b>	5.0" Inch Color TFT LCD 800 x 480 pixels with Industrial projected capacitive touch screen.
<b>COMMUNICATION INTERFACE</b>	RS 232 and RS 485
<b>CERTIFICATIONS</b>	CE, EN 61010-1, EN 61326,IP66,IP68
<b>ENCLOSURE</b>	IP66, IP68 (24 Hours-2M Depth) Industrial Polycarbonate Housing Optional pipe mounting brackets/ Pole Mounting/Wall Mounting/Panel Mounting Brackets.
<b>DIMENSIONS</b>	296 x 225 x 185 mm
<b>WEIGHT</b>	3Kg approx. (Depending on Configuration)

## ANALOG SENSORS



### VizSens-PH(Analog)

The pH Sensor is widely used in pH monitoring in water treatment, hydrological monitoring, wastewater treatment, swimming pools, fish ponds and fertilizers, chemicals, and biology. It uses a composite electrode in which a glass indicating electrode and a reference electrode are combined to measure the pH of the water.



### VizSens-ORP(Analog)

The VizSens-ORP(A) ORP sensor is a combination electrode that includes a metals indicator electrode with a reference electrode. It measures the difference between the working battery composed of the measuring electrode and the reference electrode in a solution. By utilizing the linear relationship between the ORP value of the measuring solution and the potential of the working battery.



### VizSens-EC(Analog)

The VizSens-EC(A) Conductivity Sensor, featuring a glass platinum electrode, is a reliable instrument for accurate conductivity monitoring. It utilizes voltage and current values to determine conductivity, making it an essential tool for applications in water treatment, hydrological monitoring, wastewater treatment, swimming pools, as well as in fertilizers, chemicals, and biology industries.

## DIGITAL SENSORS



### VizSens-PH(Digital)

The PPH-500B pH is a digital pH sensor with an RS485 communication interface and the standard Modbus protocol. Stainless steel corrosion resistant shell, IP68 protection grade, built-in PT1000 thermistor and compensation algorithm, with high precision, long life, small drift and other advantages, suitable for all kinds of harsh working environment.



### VizSens-EC(Digital)

VizSens-EC(D) Conductivity Sensor with a durable PPS(polyphenylene) Shell. This sensor offers precision, reliability, and versatility, making it an ideal solution for diverse applications. It features a wide measurement range with automatic range switching, ensuring accurate results even in challenging conditions.



### VizSens-ODO

The VizSens-ODO Optical Dissolved Oxygen Sensor utilizes fluorescence technology to accurately measure dissolved oxygen concentration. A luminescent material on the sensor's cap is excited by blue LED light, emitting red light. The intensity and time of the red light are indicative of oxygen molecule concentration, enabling precise calculations.



### VizSens-RCL

A constant voltage principle to measure these components in water. The instrument utilizes stable electric potential and current signals to calculate concentrations, offering a simple structure, easy maintenance, and exceptional accuracy.



### VizSens-UVCOD

The VizSens-UVCOD series COD/BOD/TSS/TOC sensor represents a new era in environmental protection sensors, offering reagent-free, pollution-free, economical, and eco-friendly water quality monitoring. This sensor is compact, easily installable, and enables online continuous monitoring.



### VizSens-SS

The VizSens-SS Sensor is a highly capable solution designed for precise and reliable measurements in a variety of environments. This sensor employs advanced technology and robust construction to offer a wide measurement range and high accuracy. Consists of features like plug-and-play installation and versatile communication protocol.

## D I G I T A L   S E N S O R S



### VizSens-Turb

The VizSens-Turb is a highly capable turbidity sensor known for its accurate and stable measurements. Equipped with advanced infrared scattered light technology, it offers excellent repeatability and reliability. With a built-in self-diagnosis function and optional automatic cleaning, it ensures data accuracy while reducing maintenance efforts.



### VizSens-TurbLo

The VizSens-TurbLo is a highly reliable and robust turbidity sensor designed to provide accurate and consistent measurements within a range of 0.01 to 100 NTU. With its durable construction, easy installation, and user-friendly operation, this sensor is an excellent choice for environmental monitoring and water treatment applications.



### VizSens-CPHL

The chlorophyll sensor uses the characteristic that chlorophyll A has an absorption peak and an emission peak in the spectrum, and emits monochromatic light of a specific wavelength to the water. The light intensity of chlorophyll A is proportional to the content of chlorophyll A in the water.



### Vizsens-BGA

The Vizsens-BGA is an advanced sensor engineered for precise monitoring of Blue-Green Algae in water. With a wide measurement range of 0 to 300,000 cells/mL and an accuracy of  $\pm 10\%$ , it ensures reliable detection of algae levels. This compact sensor features a durable design, MODBUS RS485 communication, and various features to facilitate seamless integration with compatible controllers.



### VizSens-OIW

The VizSens-OIW is an advanced oil in water sensor utilizing ultraviolet fluorescence technology. It excels in precision and versatility, with a wide detection range from 0 to 50ppm. Designed for efficient monitoring of oil levels in water, even in the presence of suspended solids, this sensor integrates seamlessly with compatible controllers.



### VizSens-NH4N

The VizSens-NH4N is a highly accurate and reliable sensor designed for measuring Ammonia Nitrogen ( $\text{NH}_4\text{-N}$ ) levels in water. With a pH range of 4-10 and a precision of  $\pm 0.1$ , it ensures precise and consistent readings. Operating up to 10 meters underwater with IP68 protection, it's suitable for various environmental applications. Compatible controllers, the VizSens-NH4N supports RS-485 and MODBUS protocol for seamless integration and data transmission.



### VizSens-NO3N

The VizSens NO<sub>3</sub>N is a highly accurate and reliable sensor designed for measuring Nitrate nitrogen ( $\text{NO}_3\text{N}$ ) levels in water. With a pH range of 4-10 and a precision of  $\pm 0.1$ , it ensures precise and consistent readings. The sensor features a digital RS-485 output with MODBUS protocol for seamless data transmission and integration with compatible controllers. Operating in harsh environments with IP68 protection, and offering optional measurement of Potassium and Sodium, the VizSens NO<sub>3</sub>N is an efficient and versatile solution for water quality monitoring and environmental applications.



**OPTICS 1000**  
( Multiple Channel Transmitter )

The Optic 1000 Series is a high-performance online water analyser that provides accurate and reliable measurements for a wide range of water quality parameters such as Ammonium, Nitrates, Nitrites, Total Nitrogen, Phosphates, Total Phosphates, Organic Matter, Total Organic Carbon, Sulfides, Sulfites, Total Sulfur, Total Suspended Solids, Turbidity, Color, Chlorine, Chlorine Dioxide, Hydrocarbon, Aromatic Compounds, Phenol, Dissolved Oxygen, Conductivity, Ozone and pH. This device offers versatility for a wide range of applications also, the user-friendly interface enables user to pick any 4 modules and any 8 parameters of choice to be added in this modular analyser.

## Technical Specifications

ENCLOSURE	
Type	Wall Mounted / Set / Portable (Optional handles)
Material	SS316L
Dimensions (HxWxD)	450x350x200 mm
Weight	± 15 kg
Protection class	IP65
Area Classification	Safe, Zone 1 or 2 <i>(Available on request)</i>
SAMPLE CONDITION	
Flow	0.2 L/min
Pressure	< 2 bars
Temperature	0... 50°C
CONTROLLER	
Display	8.5" TFT colour screen 16/9 (LED backlight)
Resolution	800 x 480 px
Touch screen	Glass to glass
Memory	16 GB SD card
Data transfer	USB type A
Operating temperature	0... 50°C
Operating humidity	< 90 % RH
COMMUNICATION OUTPUT	
Analog	4-20 mA isolated (Active or Passive) / 500 Ω max
Relay	Programmable limit or fault alarms / 5A (NO) 3A (NC) @ 277 VAC
Digital	RS485 / Modbus (Slave or Master) - Show value, calibration status, fault status...
POWER SUPPLY	
Voltage	100 ... 240 VAC (50 - 60 Hz) or 24 VDC (Universal)
Consumption	< 20 W (60 W max.)



## P R E S S U R E

Useful for monitoring level, volume, and mass flow in liquids, commonly employed in chemical and process industries. Absolute and Gauge Pressure: Ensures precise pressure data, vital for industrial process control.



## L E V E L

Reliable for non-contact level measurement in both liquids and bulk solids, performing well under extreme conditions.

Ultrasonic Level Measurement: A cost-effective, non-contact solution for both fluid and solid measurements.



## F L O W

Ideal for measuring conductive fluids, including liquids and slurries, making them a perfect fit for industries such as water treatment and food & beverage.

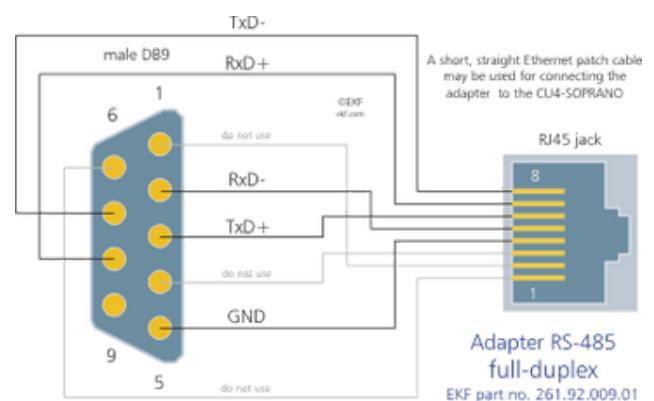


## D A T A L O G G E R

Pioneering Analytical Excellence we are passionate about empowering scientific advancements through cutting-edge digital solutions.

Also our Data Logger provides you excellent Internal Hardware features for your industrial use. It may consist of several interfacing features that are mentioned below.

- USB 5V Power Supply Port
- 4x USB Port
- Ethernet Connector
- HDMI
- Camera Connector
- Display Connector



## FIXED GAS DETECTORS

This gas detector is designed for the detection of flammable, explosive, and toxic gases in hazardous environments. It incorporates advanced catalytic combustion sensors or imported electrochemical sensor technology, offering high precision and stable signal output. The robust, explosion-proof, and flame-resistant casing, crafted from cast aluminum with a one-piece molding design, ensures durability and reliability.



## HANDHELD MULTI GAS DETECTORS

This pump-type gas detector offers ultra-high sensitivity for detecting a wide range of gases. Its compact design ensures easy operation and portability, while the flexible probes enhance user comfort. The instrument employs various detection principles depending on the target gas, providing versatility in a range of environments.



## HANDHELD GAS DETECTORS

The KP836 portable gas detector can simultaneously detect four types of gases, including combustible gases, oxygen, carbon monoxide, and hydrogen sulfide. The device can also be customized to detect a single gas or any combination of gases, with real-time results displayed on the screen. Manual operation can be initiated at any time by the user.



## MULTI GAS PORTABLE GAS ANALYSERS

This portable, high-sensitivity multi-gas detector is designed for industrial use, making it ideal for gas leak detection in rescue operations, underground pipelines, mines, and other hazardous environments. It ensures worker safety and protects equipment from potential damage. The device primarily detects pipeline gas leaks but can be customized to detect various gases depending on the sensor type.

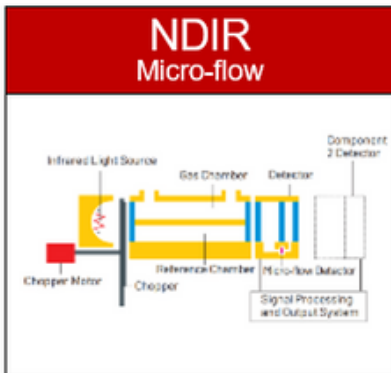


With easy operation, portability, and strong seismic resistance, it is equipped with high-resolution dot-matrix LCD technology for clear and intuitive display.

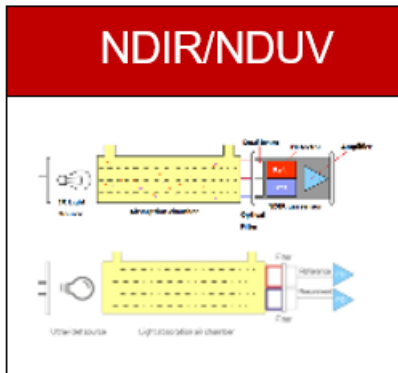
GAS DETECTED	MEASURING RANGE	OPTIONAL RANGE	RESOLUTION RADIO	RESPONSE TIME
LEL - combustible gas	0-100% LEL	0-100% VOL (Infrared or Catalytic)	1%LEL / 1%VOL	≤ 10s
Carbon Monoxide	0-1000 PPM	0-500/2000/5000 PPM	0.1 PPM / 1 PPM	≤ 10s
TVOC	0-100 PPM	0-100 PPM	0.1 PPM / 1 PPM	≤ 15s
Hydrogen	0-100% LEL	0-1000 PPM	1%LEL / 1 PPM	≤ 15s
Natural Gas	0-100% LEL	0-100% LEL	1%LEL	≤ 10s
Oxygen (O2)	0-30% VOL	0-30%, 0-100% VOL	0.1%VOL	≤ 10s
Ozone	0-10 PPM	0-20, 100 PPM	0.01 PPM / 0.1 PPM	≤ 15s
Hydrogen Sulfide	0-100 PPM	0-50, 200, 1000 PPM	0.1 PPM / 1 PPM	≤ 10s
Methane	0-100% LEL	0-100% VOL	1%LEL / 1%VOL	≤ 10s
Flourine	0-10 PPM	0-1, 10 PPM	0.1 PPM / 1 PPM	≤ 15s
Hydrogen Chloride	0-20 PPM	0-20 PPM / 50 PPM / 100 PM	0.01 PPM / 0.1 PPM	≤ 15s
Nitrogen	0-30% VOL	0-30% VOL, 100% VOL	0.1%LEL / 1 PPM	≤ 10s
Hydrogen	0-100% LEL	0-1000 PPM	1%LEL / 0.1 PPM	≤ 15s
Chlorine	0-20 PPM	0-10, 100 PPM	0.1 PPM	≤ 15s
Ammonia Gas	0-100 PPM	0-50, 500, 1000 PPM	0.1 PPM / 1 PPM	≤ 15s

## OTHER PRODUCTS RANGE

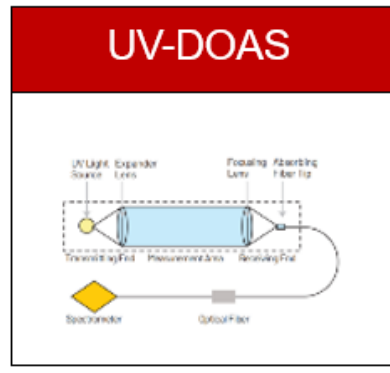




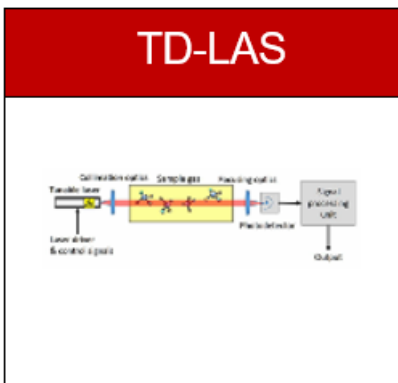
Flue Gas (SO <sub>2</sub> , NO, CO)	
Flue Gas (SO <sub>2</sub> , NO, CO)	
Green House Gas (CO <sub>2</sub> , CH <sub>4</sub> , N <sub>2</sub> O, CO)	
CEMS (SO <sub>2</sub> , NO, CO)	



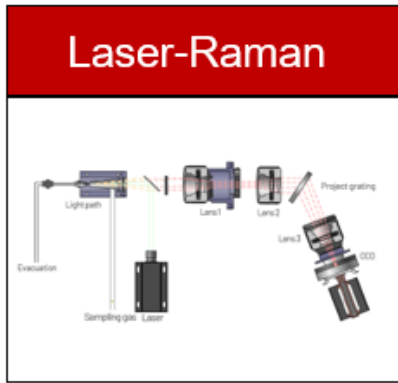
Syngas (CO, CO <sub>2</sub> , CH <sub>4</sub> , CnHm)	
Biogas (CH <sub>4</sub> , CO <sub>2</sub> )	
Automobile Emission Gas (CO, CO <sub>2</sub> , HC)	
Headspace Gas (CO <sub>2</sub> )	



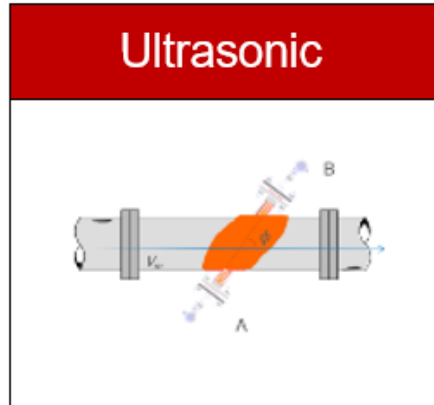
Flue gas (SO <sub>2</sub> , NO, NO <sub>2</sub> )	
Biogas (H <sub>2</sub> S)	
Ammonia (NH <sub>3</sub> )	
Ship CEMS (SO <sub>2</sub> , NO, NO <sub>2</sub> )	



Process Gas (O <sub>2</sub> , CO, CO <sub>2</sub> , CH <sub>4</sub> )	
Ammonia (NH <sub>3</sub> )	



Process Gas (N <sub>2</sub> , H <sub>2</sub> , O <sub>2</sub> , CO, CO <sub>2</sub> , CH <sub>4</sub> , C <sub>2</sub> H <sub>2</sub> , C <sub>2</sub> H <sub>4</sub> , C <sub>2</sub> H <sub>6</sub> , C <sub>3</sub> H <sub>8</sub> , C <sub>4</sub> H <sub>10</sub> , etc)	



Biogas (Flow rate)	
Natural Gas (Flow rate)	



# LET'S CONNECT!

Let's work together to find a solution that works for you



## Contact Us :

+36 70328 6862

1132, Budapest Váci ut 16 Faz 12. ajto

<https://advanceanalytik.com>

[sales@advanceanalytik.com](mailto:sales@advanceanalytik.com)

